



Academy

DIRECT LASER SYSTEM

ENGRAVING METHODS

Stylus
(electromechanical)



Variable in size and depth

Laser Etching



Variable only in size

Direct Laser



Variable in shape, size and depth

LASER IMAGING ANOTHER DIMENSION...

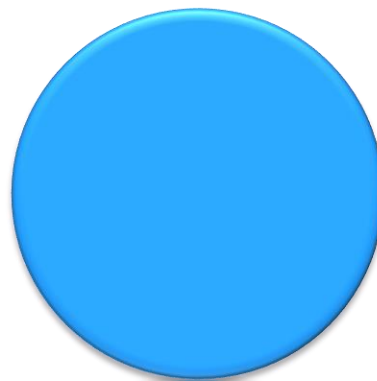
Exposition Laser
Think-Lab
 $\varnothing \sim 2 \mu\text{m}$



Laser direct
 $\varnothing \sim 10 \mu\text{m}$



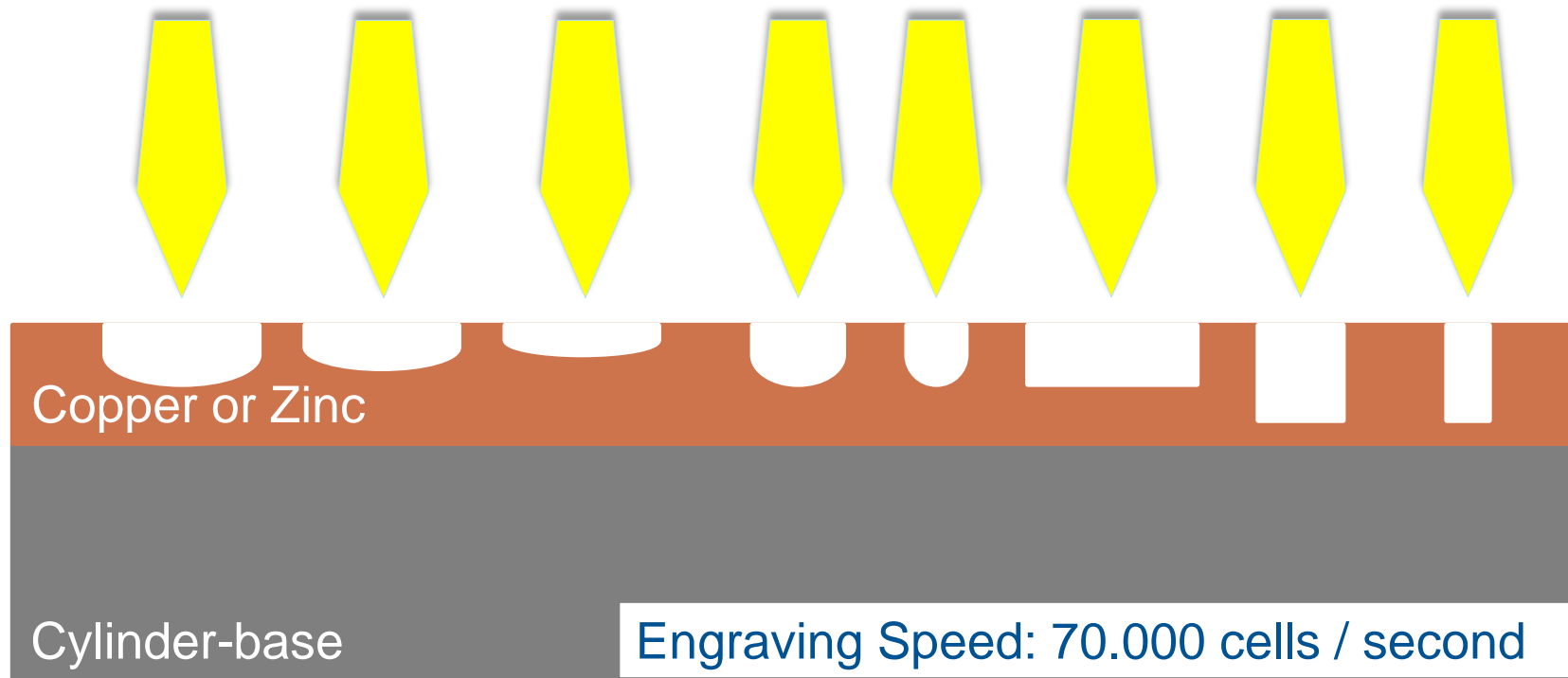
DLS
Masterscreen
 $\varnothing \sim 35 \mu\text{m}$



Human Hair
 $\varnothing \sim 100 \mu\text{m}$



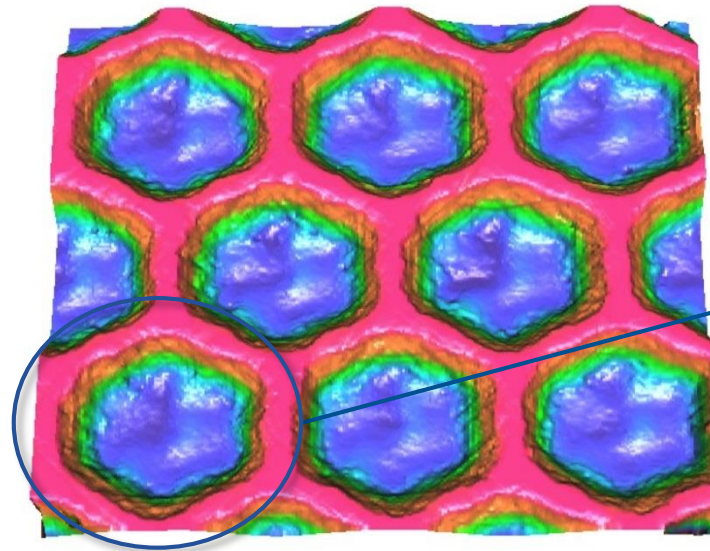
FREE CELL GEOMETRY



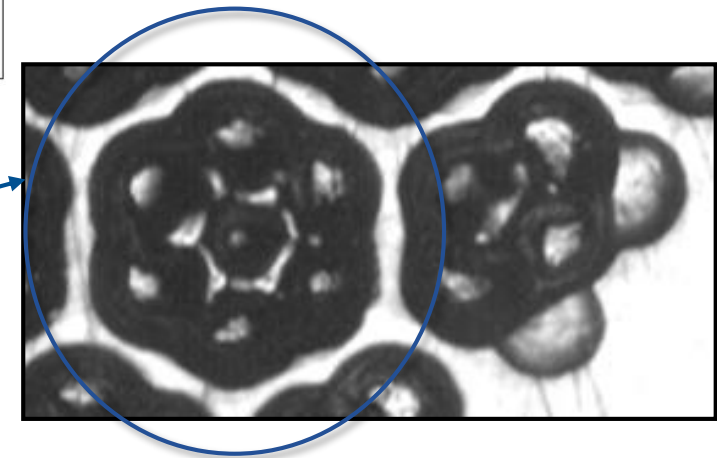
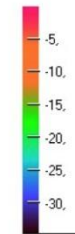
LASER SYSTEM DAETWYLER DLS



Single Shot

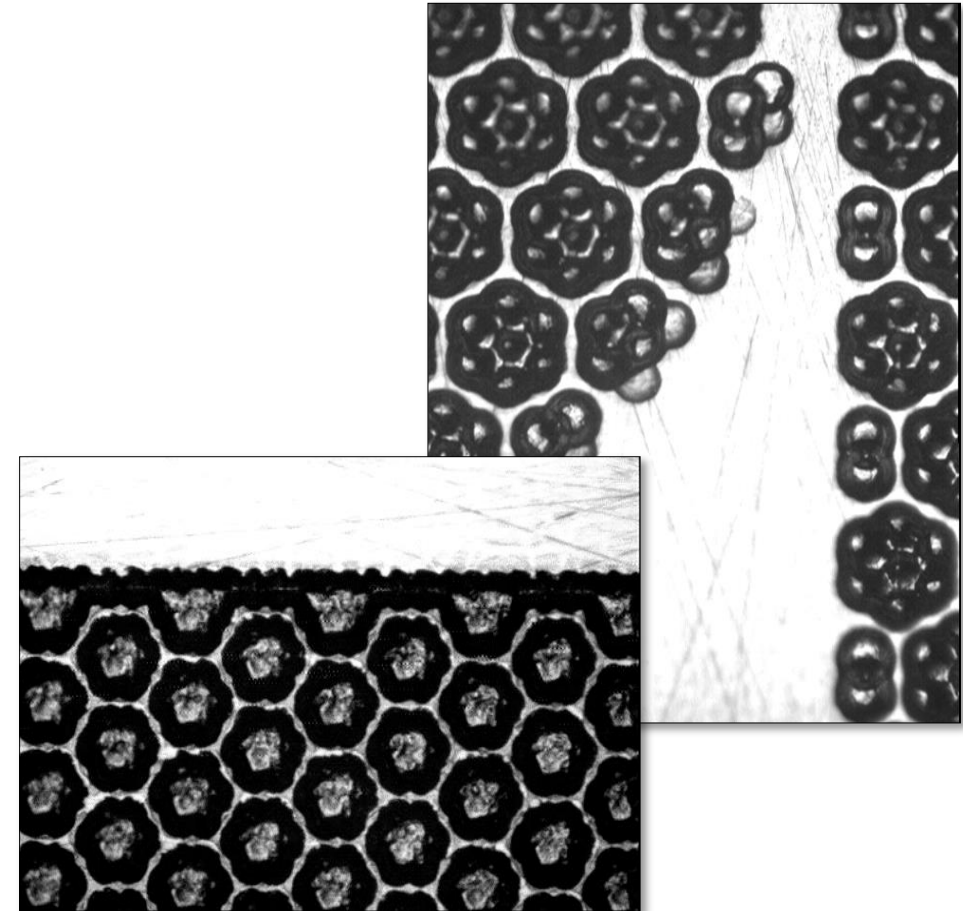


Master Screen



ADVANTAGES

- Text, line work print sharp
- „Outlines“ possible
- Offset-Quality with gravure density
- Subtle vignettes
- Well closed ink film



DIRECT LASER SYSTEMS

- Digilas
- Cellaxy





COPYRIGHT JANOSCHKA

All contents of this presentation are subject to Janoschka's copyright. All rights reserved. Information in this presentation, including but not limited to wordings, pictures and audio material explicitly require the written approval of Janoschka for duplication, transmission, distribution.