

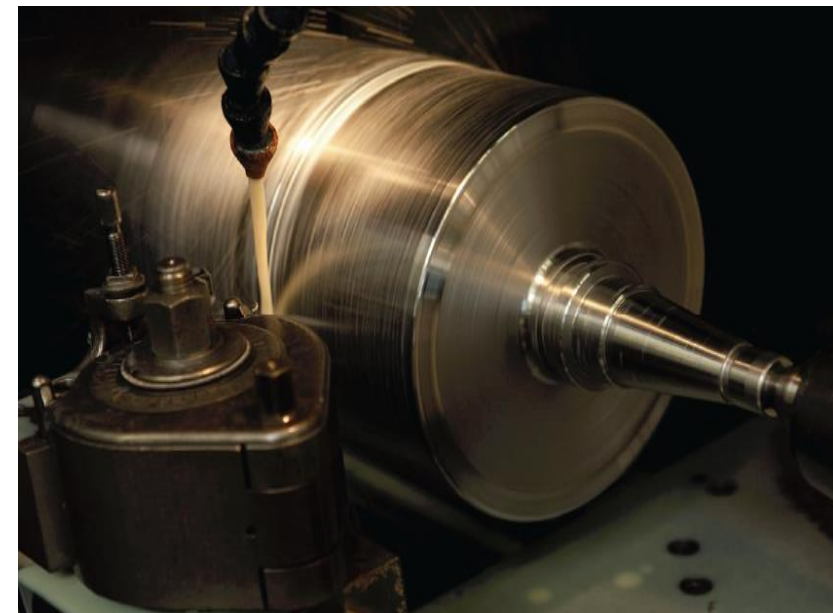


Academy

PREPARATION



CYLINDER BASE



CYLINDER KINDS AND TYPES

- Shafted cylinders
- Shaftless cylinders
- Light weight solutions
- Sleeve systems



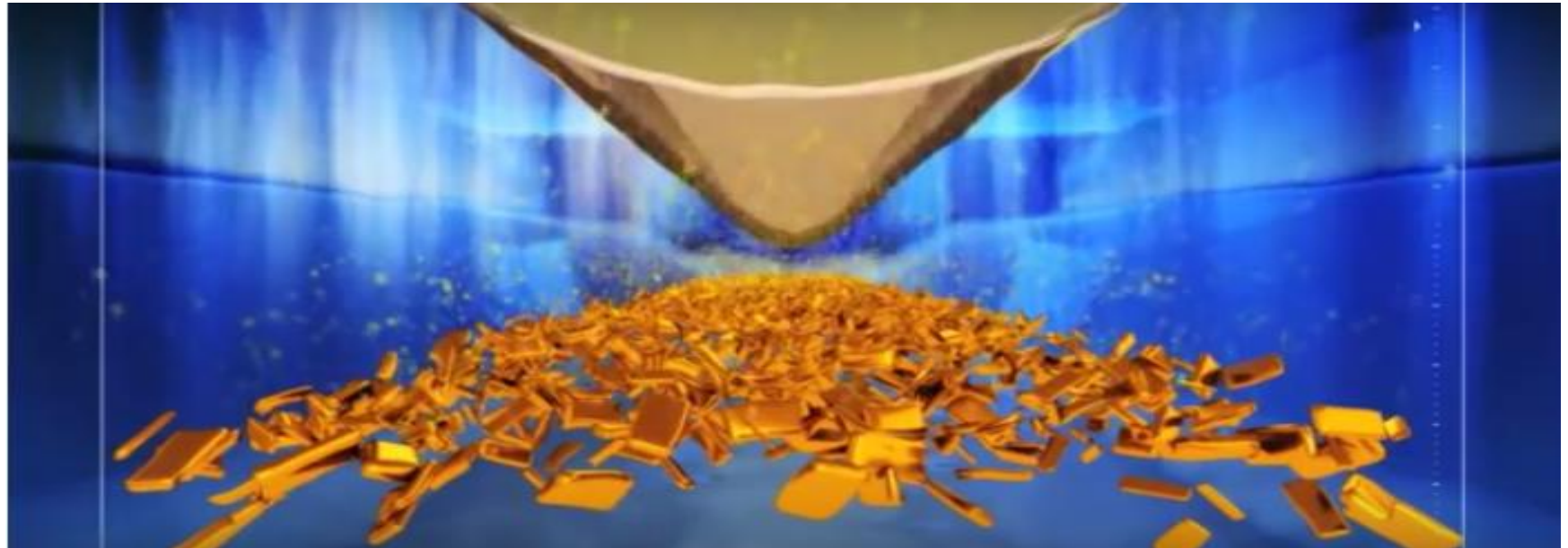
CYLINDER KINDS AND TYPES

Requirements for all kinds of cylinder:

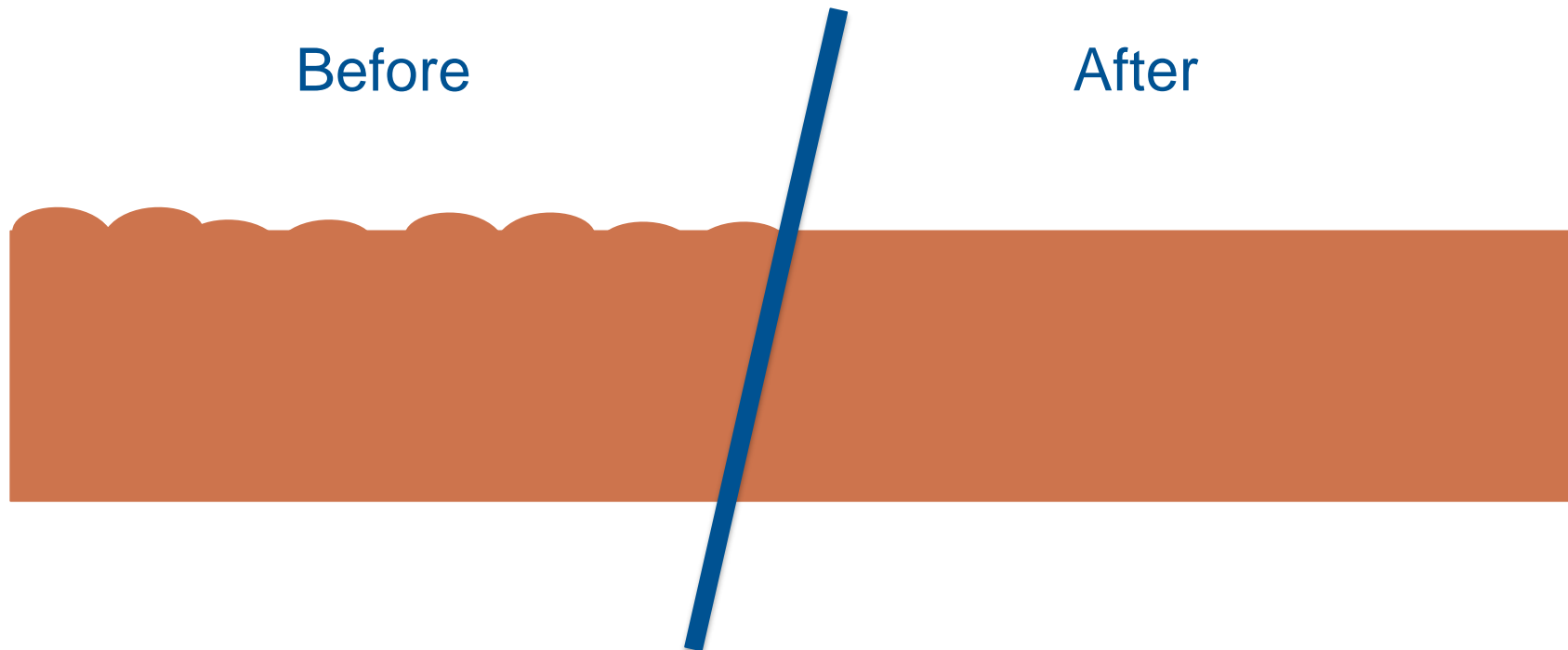
- Even concentricity
- Perfect balance (low tolerances)
- High bending endurance



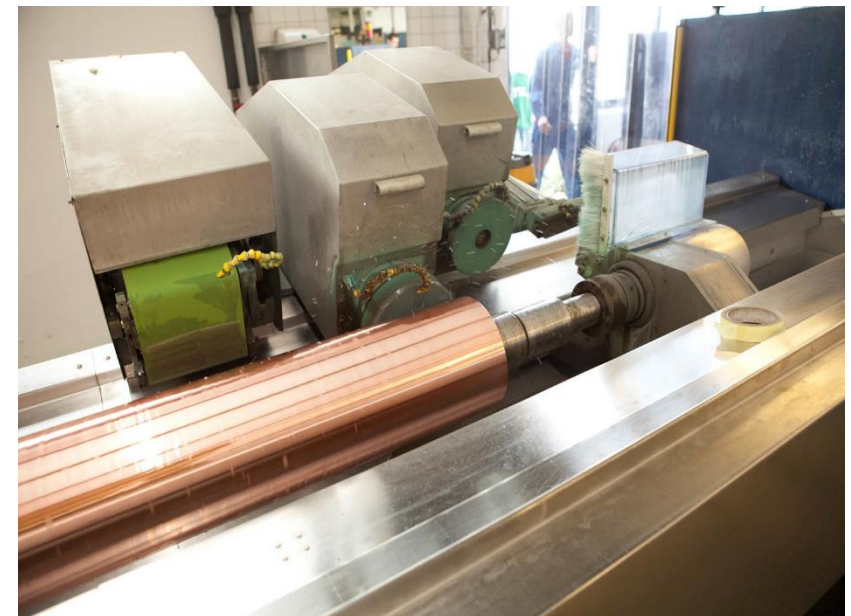
COPPER PLATING



POLISHING CYLINDER SURFACE

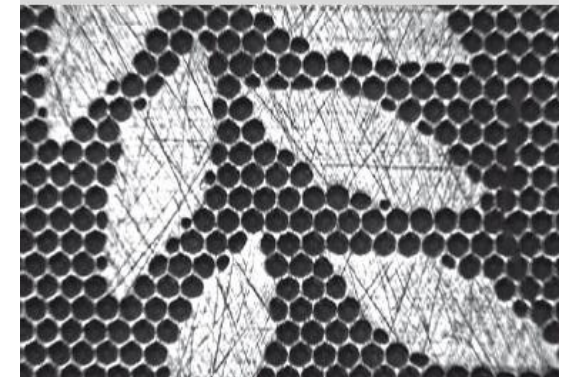
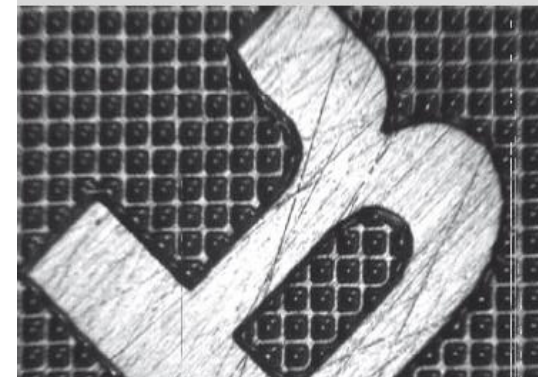
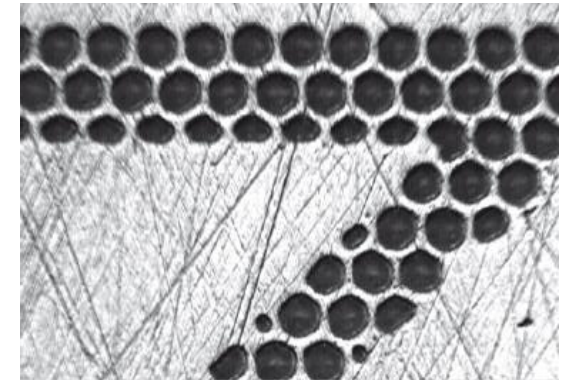


FINISHING



SURFACE STRUCTURE

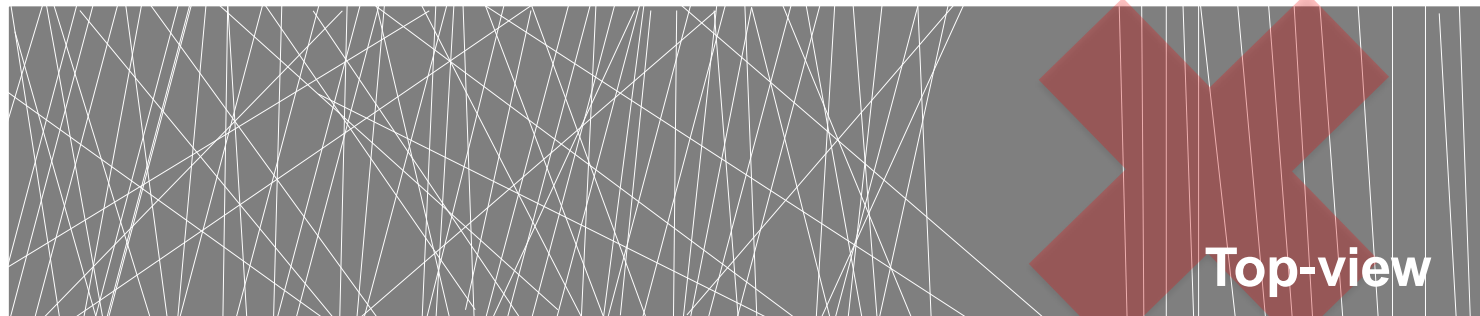
Surface structure in non-printing areas,
finished (chrome plated) cylinder



LUBRICATION: CYLINDER – DOCTOR BLADE

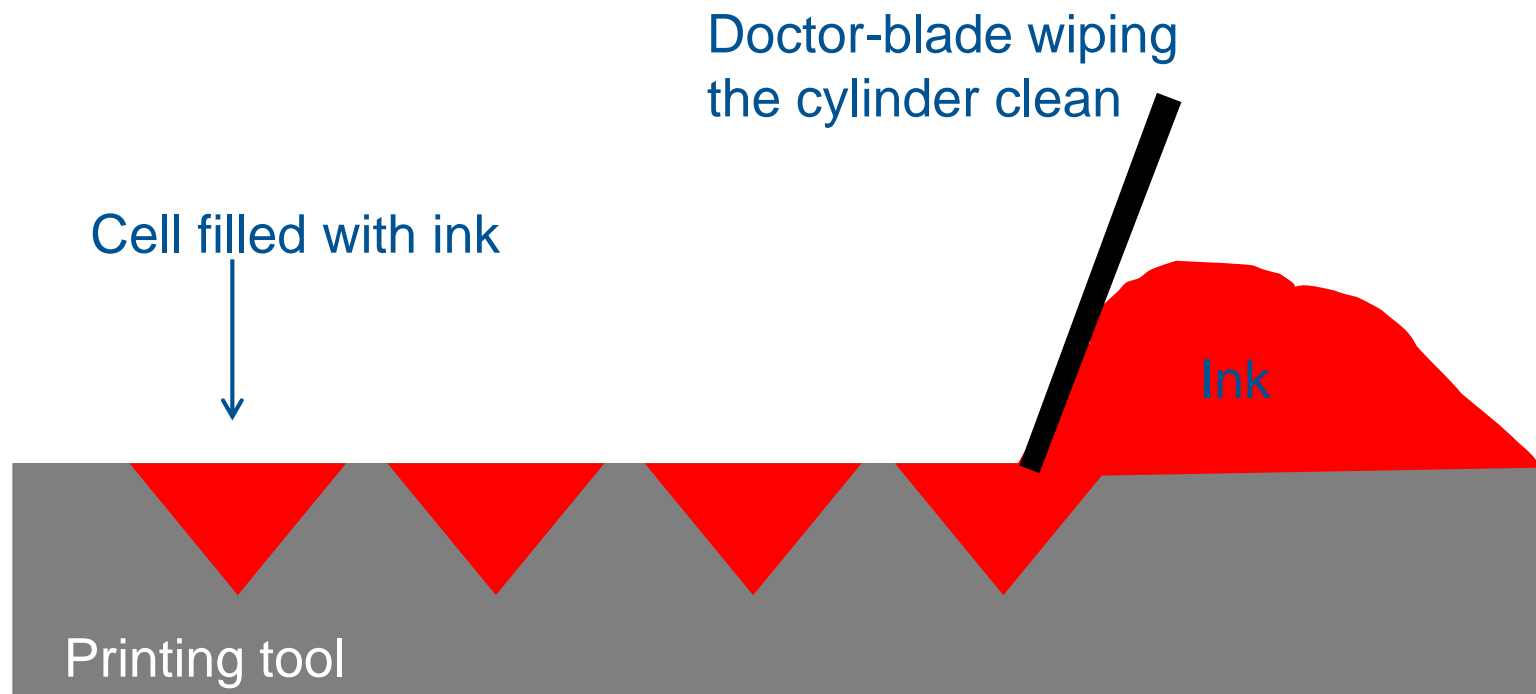


Cross structure
obtained
during finishing
in copper



Straight lines are
not effective,
Cross structure is
needed

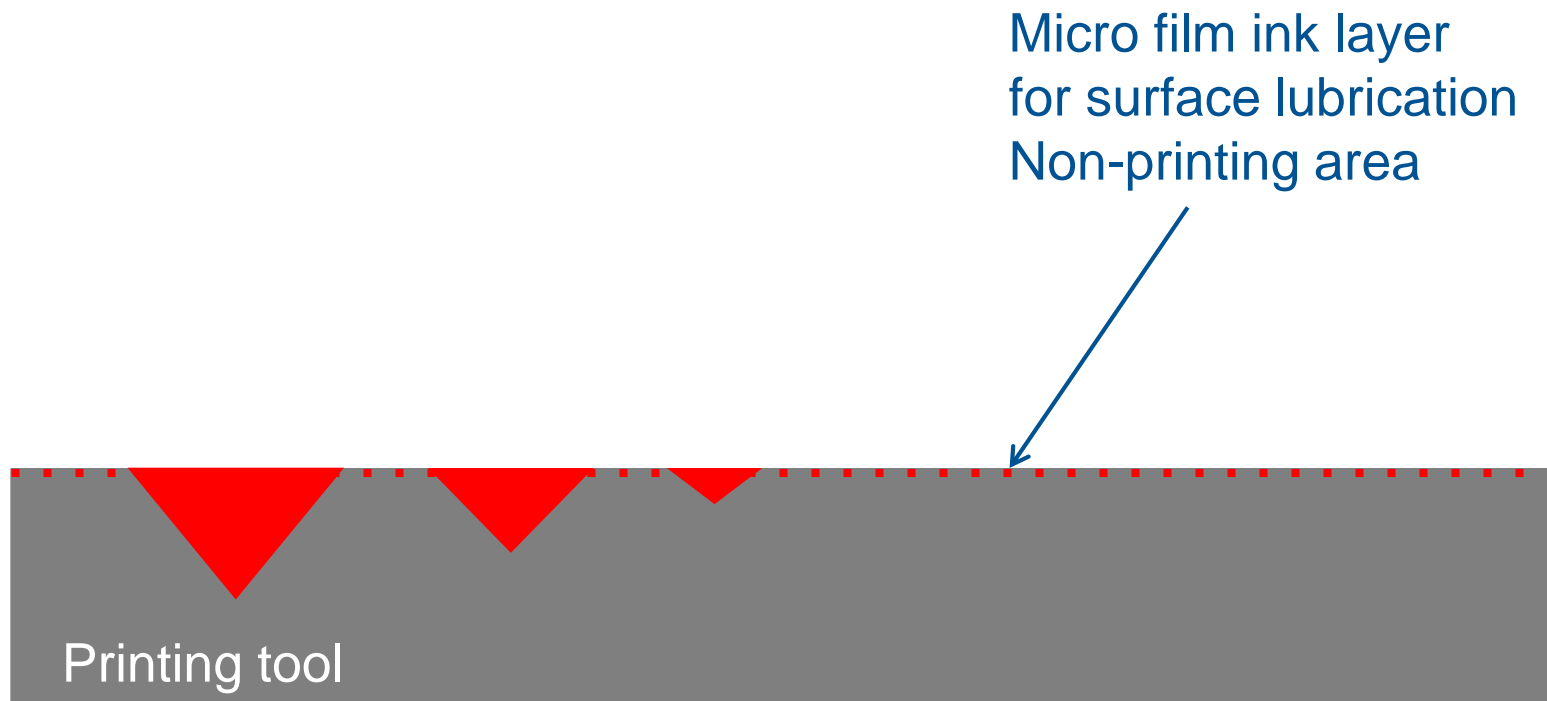
RUGOSITY ROTOGRAVURE PRINTING



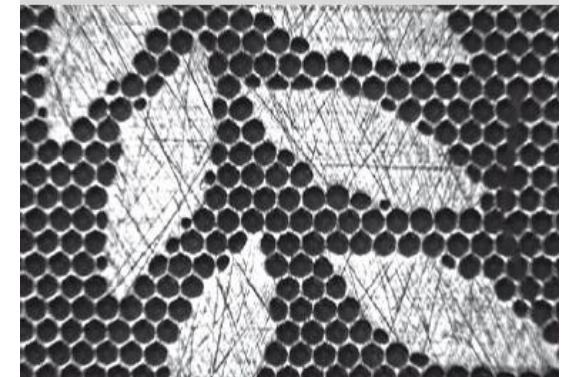
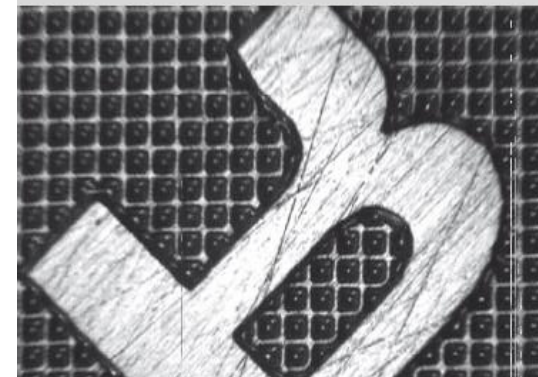
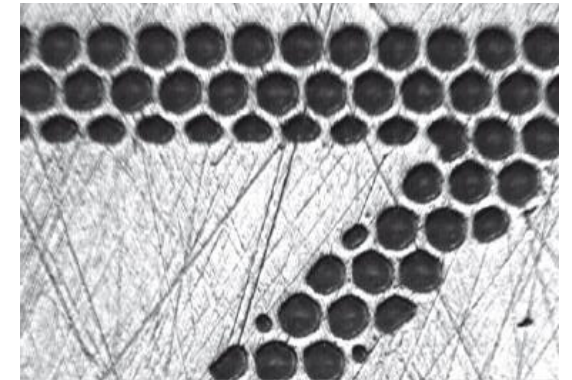
RUGOSITY ROTOGRAVURE PRINTING



LUBRICATION: CYLINDER – DOCTOR BLADE



SURFACE STRUCTURE





COPYRIGHT JANOSCHKA

All contents of this presentation are subject to Janoschka's copyright. All rights reserved. Information in this presentation, including but not limited to wordings, pictures and audio material explicitly require the written approval of Janoschka for duplication, transmission, distribution.