

PRODUCT INFORMATION

Engraving

Flexo

Bases

Embossing

Artwork & Repro

Colour Management



Tailor-made prepress solutions and products are among the core competencies of Janoschka Group. As a leading full service provider in the packaging and decor industry, all technologies currently available on the market are utilised for the production of rotogravure printing forms. Electromechanical engraving, including the high-resolution processes “Xtreme Engraving” and “TranScribe”, impress with their high quality concerning detail reproduction and contour sharpness. The direct laser system uses a laser beam to create the image onto the zinc surface of the cylinder without actually touching the cylinder. The excellent quality of the direct laser is evident by the high resolution image reproduction and perfect half tones (vignettes); line and text elements are characterised by optimal acuity and perfect solid tones.

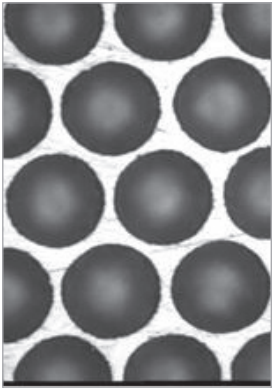
Direct Laser System (DLS) by Daetwyler

Cylinder size of shaft and shaftless cylinders		
	Circumference 450 mm – 1120 mm	Face length 720 mm – 2200 mm
	Screen width (l/cm)	Cell Type
Standard halftone (single shot)	90-140	Half autotypical Conventional Super half autotypical
Standard halftone (master screen)¹	60-100	Half autotypical Conventional
Technical cylinders and coarse screen (master screen)²	30-110	Half autotypical Conventional (small and large honeycomb)

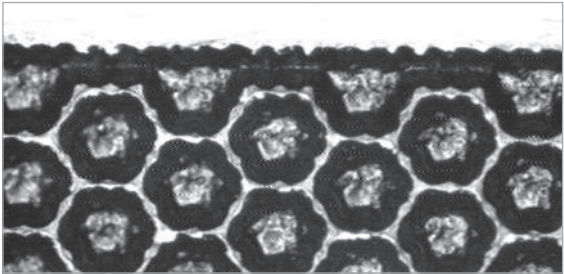
1 Optical resolution 200-360 l/cm
2 Optical resolution 156-380 l/cm Additional option: Outline



Masterscreen with outline



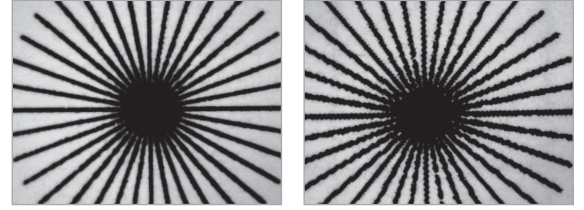
Single Shot



Masterscreen with outline

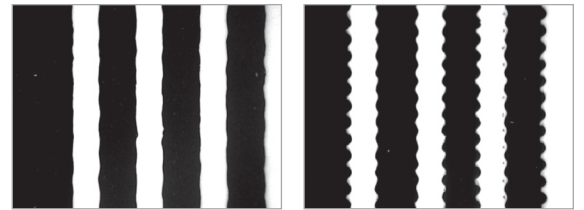
Electromechanical Engraving with Engraving Machines by Hell and Daetwyler

Cylinder size of shaft and shaftless cylinders		
	Circumference 300 mm – 1500 mm	Face length 60 mm – 3000 mm
	Screen width (l/cm)	Diamond angle
Standard halftone/line	60-100/117	120°-140°
	80-100/117	110°-140°
Technical cylinders, screen rollers and coarse screen	30-48	130°-140°
	54-70	120°-140°
	80-160	110°-140°
Hell Xtreme backing screen (R4)	100-230	120°
Hell Xtreme backing screen (R6)	100-230	120°
Daetwyler TranScribe	100-230	110°-120°



Xtreme

Conventional



Xtreme

Conventional

Digilas Laser

Cylinder size of shaft and shaftless cylinders		
	Circumference 50 mm – 500 mm	Face length 100 mm – 1700 mm
	Screen width (l/cm)	Cell type
Standard parameters	40-200	Autotypical

Special customer requests beyond these parameters are available anytime upon request. Please contact us for additional information.

Janoschka Group production capacities per year

Electromechanical Engraving	180 000	Direct Laser Engraving	15 000
-----------------------------	---------	------------------------	--------

Janoschka Group Headquarter

Mattweg 1
77971 Kippenheim
Germany
T: +49 7825 84 90
F: +49 7825 23 06
E: info@janoschka-group.com
www.janoschka-group.com



Janoschka Group is your Full Service Provider for Pre-Press – worldwide.

We are not responsible for the accuracy, completeness, and topicality of the contents. Product and other service descriptions and information do not replace or supersede contractual agreements. The contents are property of Janoschka Group. Copying and/or distribution are subject to prior approval by Janoschka Group.