



Academy

LASER ETCHING

ENGRAVING METHODS

Stylus
(electromechanical)



Variable in size and depth

Laser
Etching



Variable only in size

Direct
Laser



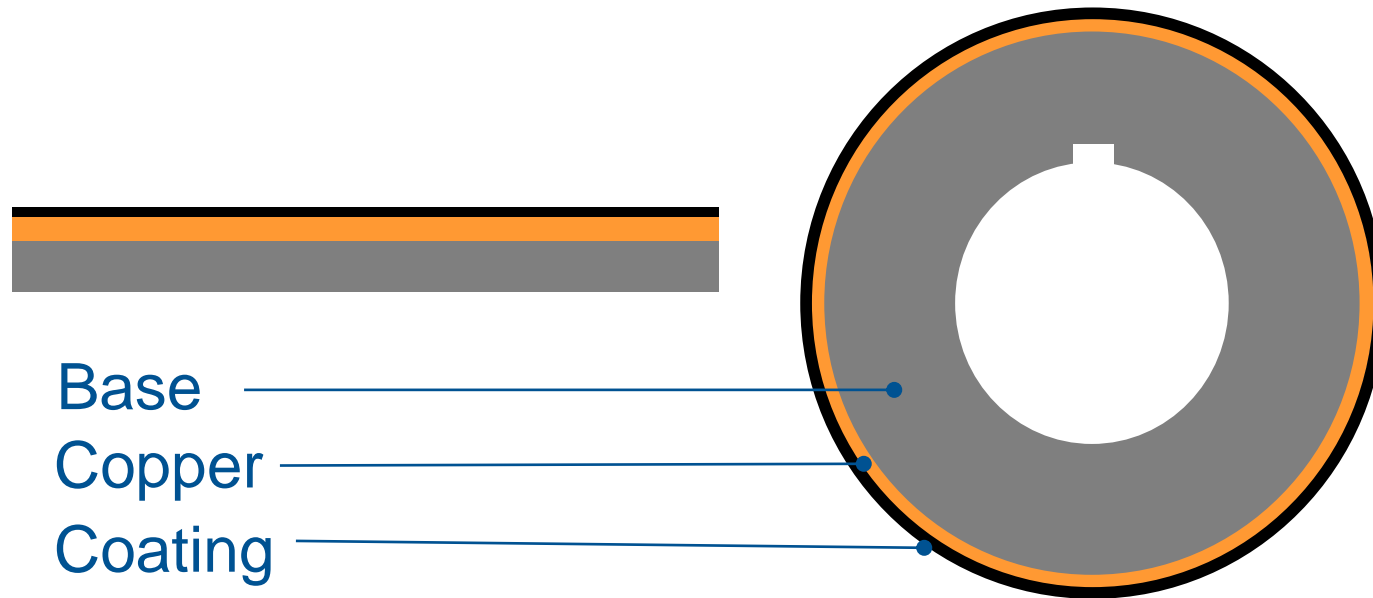
Variable in shape, size and depth

ETCHING

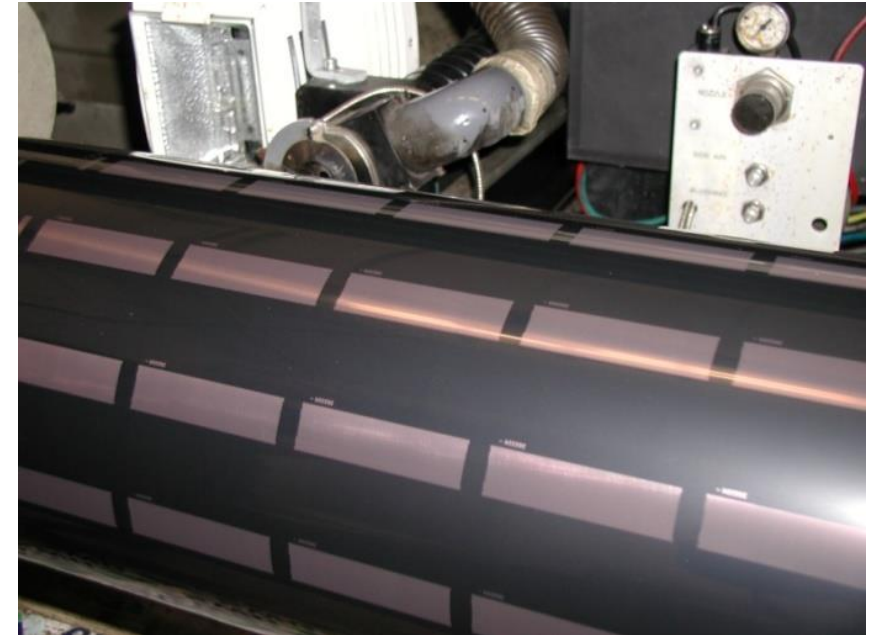
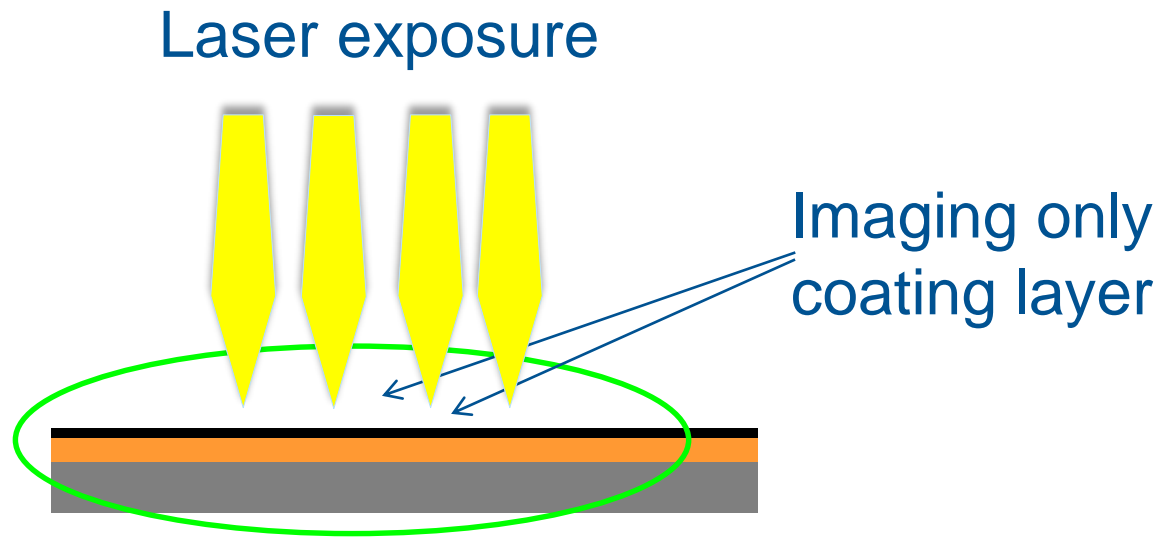
- Special screen
- Outlines
- Resolution
- Text/Logo sharpness
- Ideal for Tipping



ETCHING

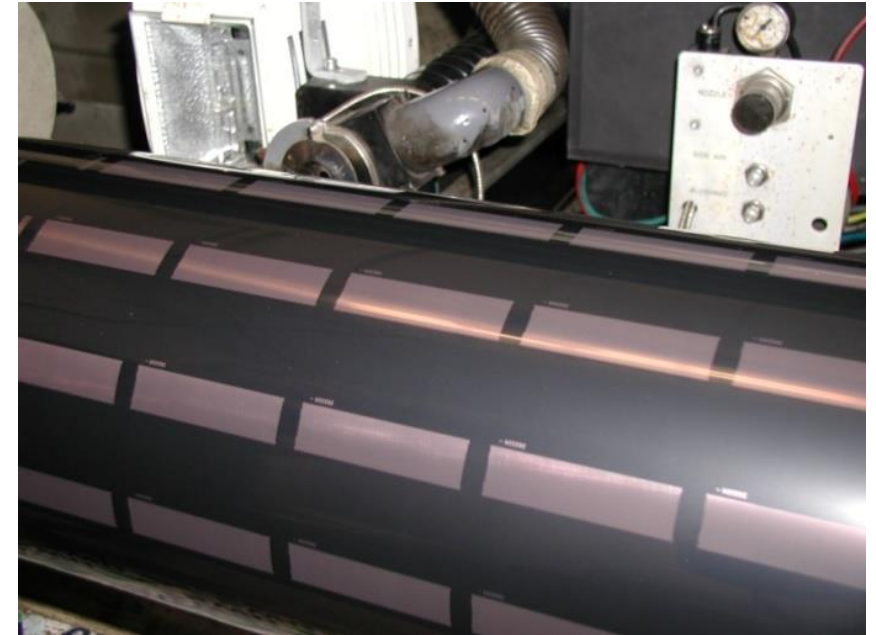
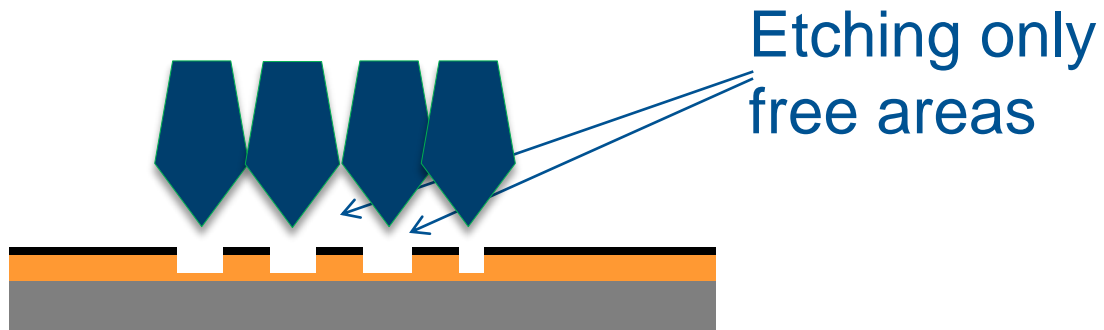


ETCHING



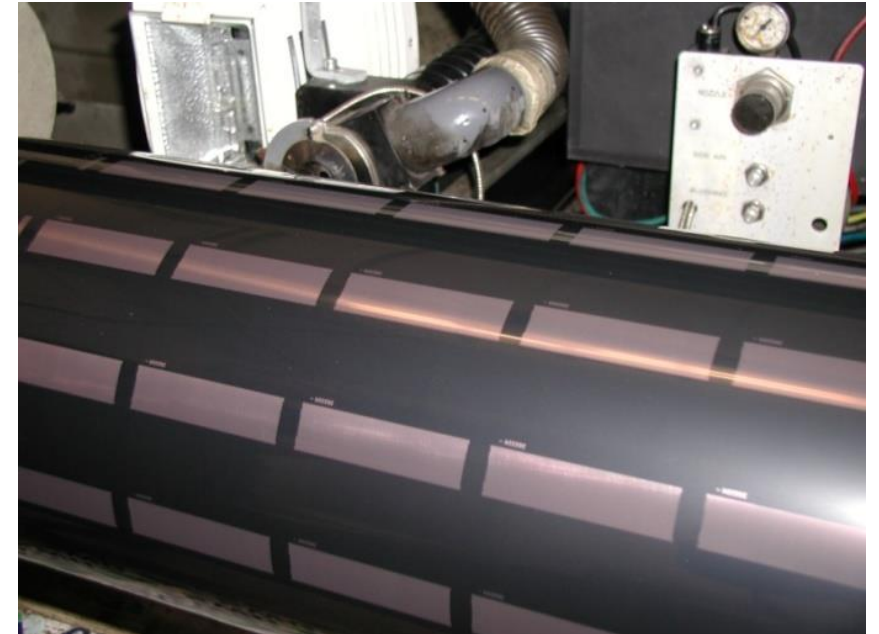
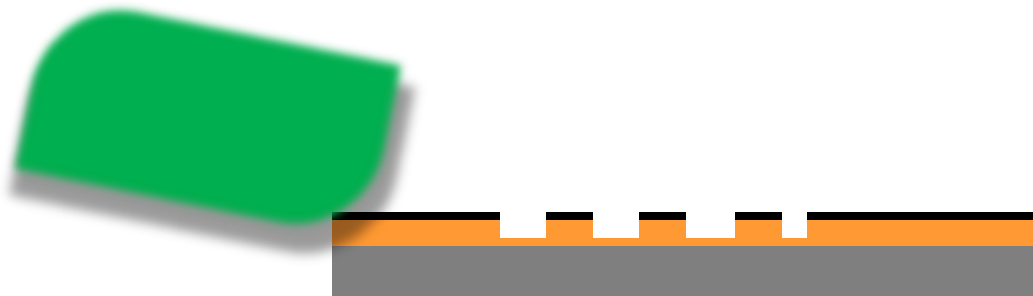
ETCHING

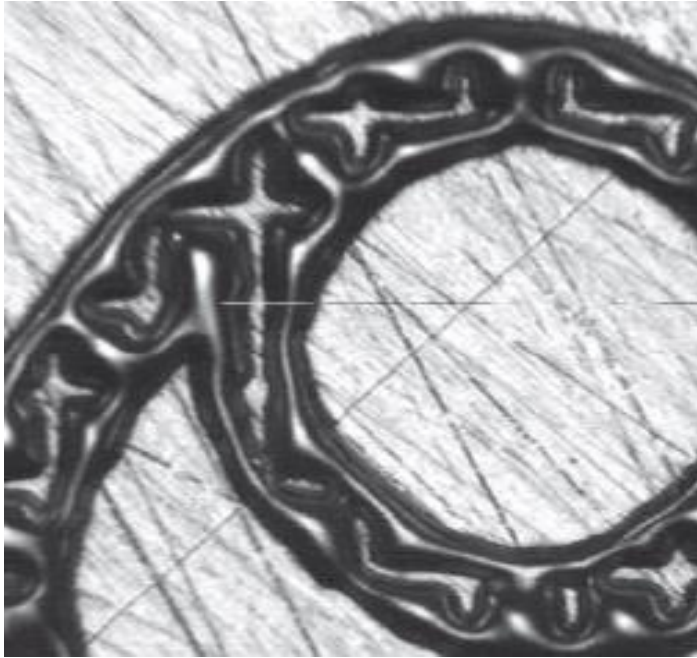
Etching agent FeIIICl



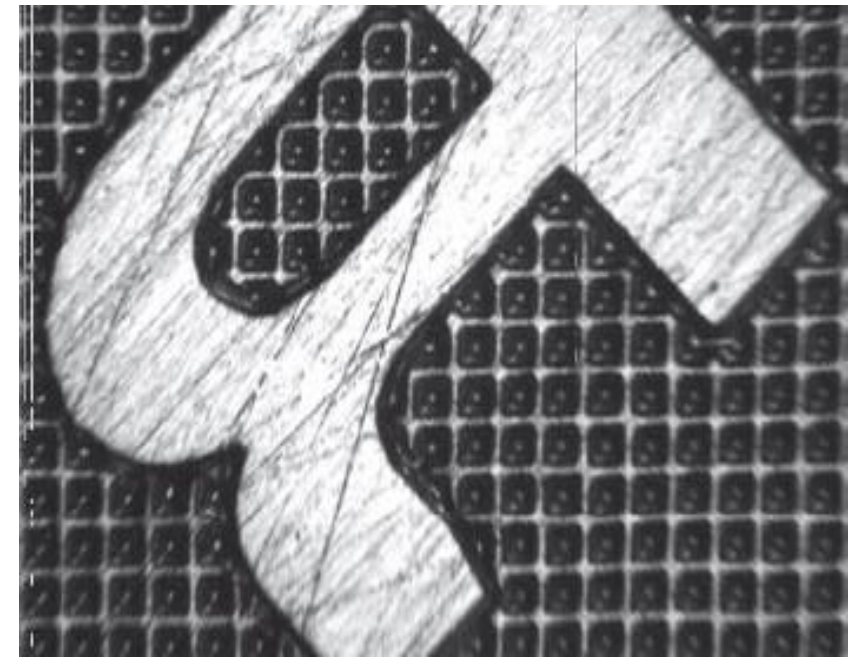
ETCHING

Removing etch resist





LASER ETCHING



IN COPPER





COPYRIGHT JANOSCHKA

All contents of this presentation are subject to Janoschka's copyright. All rights reserved. Information in this presentation, including but not limited to wordings, pictures and audio material explicitly require the written approval of Janoschka for duplication, transmission, distribution.